

# MONTHLY MEMBERSHIP PROGRESS REPORT

District 202 E

Results as of: 5/31/2026

GMT:

LOCATION NEW ZEALAND

GMT CA

| Clubs                 |               |           |               |
|-----------------------|---------------|-----------|---------------|
| RESULTS FOR 2025-2026 |               |           |               |
| QUARTER               | NEW CLUB GOAL | NEW CLUBS | DROPPED CLUBS |
| JULY/AUG/SEPT         | 0             | 0         | 1             |
| OCT/NOV/DEC           | 1             | 0         | 0             |
| JAN/FEB/MAR           | 0             | 0         | 0             |
| APR/MAY/JUNE          | 0             | 0         | 0             |

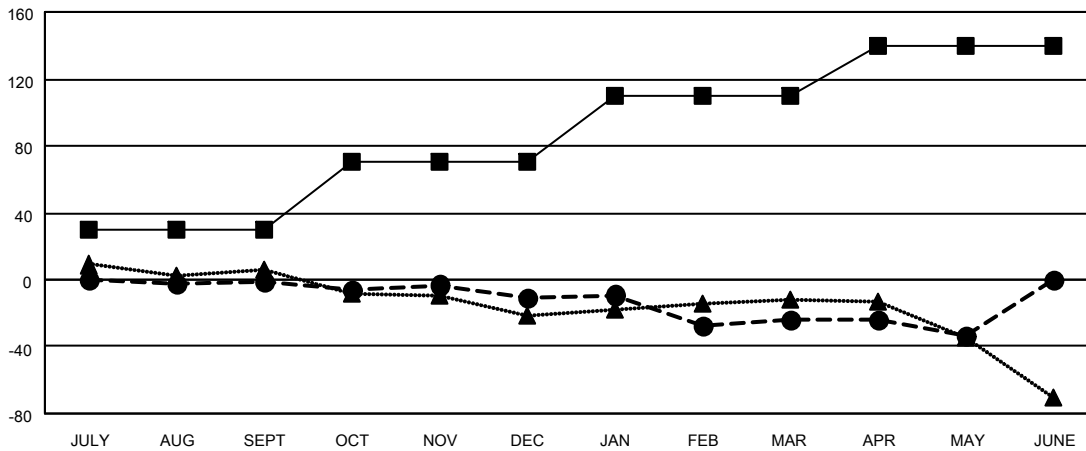
| Members               |                        |                      |  |
|-----------------------|------------------------|----------------------|--|
| RESULTS FOR 2025-2026 |                        |                      |  |
| QUARTER               | MEMBER GROWTH NET GOAL | MEMBER GROWTH ACTUAL | DROPPED MEMBERS ACTUAL (including transfers) |
| JULY/AUG/SEPT         | 30                     | 30                   | 24   |
| OCT/NOV/DEC           | 40                     | 38                   | 41   |
| JAN/FEB/MAR           | 40                     | 53                   | 44   |
| APR/MAY/JUNE          | 30                     | 17                   | 23   |

GOALS AND ACTUAL NEW CLUBS CUMULATIVE



- - CURRENT YEAR GOALS FOR NEW CLUBS
- - CURRENT YEAR ACTUAL NEW CLUBS
- ▲ - LAST YEAR ACTUAL NEW CLUBS

GOALS AND ACTUAL MEMBERS CUMULATIVE



- - MEMBER GROWTH NET GOAL
- - MEMBER GROWTH ACTUAL
- ▲ - LAST YEAR MEMBERSHIP ACTUAL

|                        |            |
|------------------------|------------|
| DROPPED CLUBS: 1       |            |
| <b>DROPPED MEMBERS</b> |            |
| DECEASED               | 15         |
| CLUB CANCELLED         | 0          |
| OTHER                  | 116        |
| <b>TOTAL</b>           | <b>131</b> |

32 CLUBS OF 39 ADDED 1 OR MORE NEW MEMBERS

| GENDER DISTRIBUTION |              |
|---------------------|--------------|
| MALE                | 754 (69.62%) |
| FEMALE              | 329 (30.38%) |

[CLICK HERE FOR CUMULATIVE MEMBERSHIP DATA](#)

|                                 |    |
|---------------------------------|----|
| TOTAL FAMILY UNIT MEMBERS       | 78 |
| FAMILY MEMBERS PAYING HALF DUES | 39 |